



SUNLIGHT

Zero-Touch Edge Computing

A hands-off approach to configuring compute infrastructure across highly distributed locations

Edge locations tend not to have IT resources available at every site. When IT teams want to add new technologies and/or refresh on-site infrastructure, they require a 'zero-touch' solution that can be deployed to each site, without the need for expensive technical skills on site. Anyone working there can unbox the hardware, plug it into the power and network, and then power it on. The nodes then show up as enabled in a central dashboard (NexCenter) for the IT team to configure and deploy applications remotely. Sunlight have an easy Zero-Touch Edge Computing solution available 'as a Service' and enabled via our partners, Lenovo and Avnet Integrated.



1. Unbox the device

- ☐ No technical skills required.

2. Plug in the network cable

- ☐ This can be into the local switch or broadband modem.
- ☐ No technical skills required.



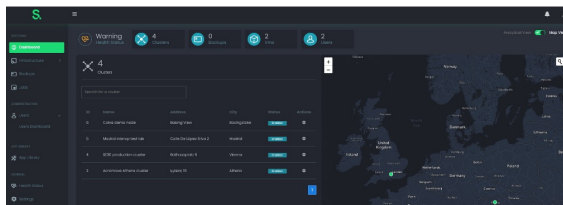
3. Power on

- ☐ Plug in the power cable and power on.
- ☐ No technical skills required.



4. Deploy applications from Sunlight NexCenter

- ☐ Credentials are provided by email.
- ☐ Wait for the node to show up as 'Enabled.'



SUNLIGHT