

SUNLIGHT

Physical Infrastructure

Edge Stack

CPU Usage 100% / 15 Cores

Memory 2.26% / 354.0 GB

Storage 1.34% / 13.1 TB

Highly Available resource management on local Sunlight clusters

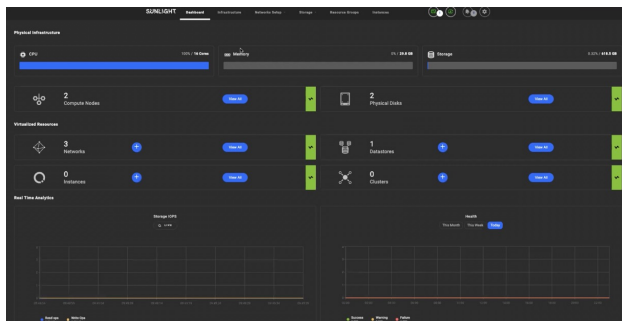
2 Compute Nodes

View All

8 Physical Disks

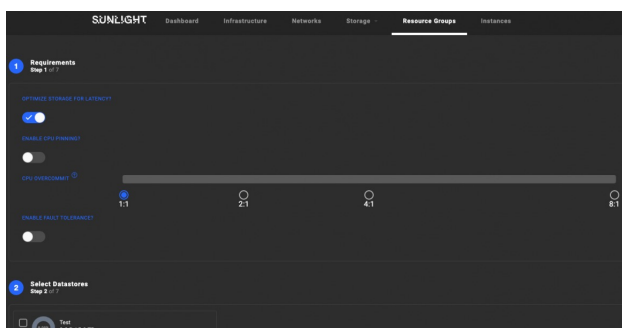
View All

The Sunlight Edge Stack, a component of Sunlight HyperConverged Edge (HCE), provides a graphical management interface onto any Sunlight cluster – including resource-limited Edge clusters. It provides Highly Available local resource management on a single pane of glass. Manage all of your VMs on a local Sunlight cluster, with fine-grained control of your resources.



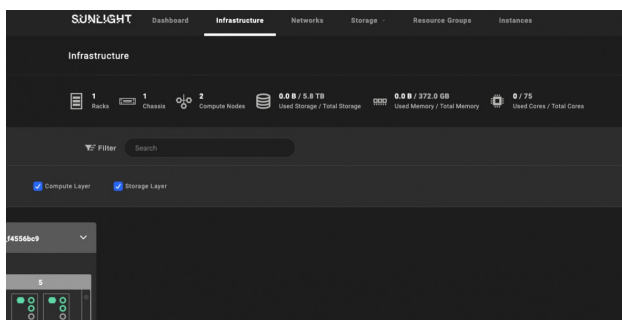
Ease of use

- Single pane of glass.
- Graphical UI.
- Deploy and manage resources across compute, storage and networking.



Flexibility and control

- Resource groups provide control to meet VM requirements.
- Ultra fine-grained control of performance when needed or simplicity when not.
- Maximum utilization of constrained Edge resources.



Highly Available by default

- Stay in control of resources at all times.
- Dashboard automatically fails over in the event of server failure.
- Manage Edge Computing resources, even when disconnected.